



Community News of Meadview and Lake Mead City

SPONSORED BY
THE COMMUNITY ORGANIZATION OF MEADVIEW

online at <www.comaz.info>

Adrienne O'Keeffe-Editor
Jonathan Kiser--Assistant Editor

DECEMBER 5, 2025

SPOTLIGHT ON BOULEVARD DECORATING: MEADVIEW STYLE

When you live in a small community with a boulevard in the center of town that doesn't have power or lamp posts, you need to be very clever in decorating for Christmas. The photos below show how we spread the Christmas decorating spirit in the median.



Merry Christmas, Meadview!



COM DECEMBER 4 MEETING



Please join us on December 4 at 10:00 am in the MCA Auditorium for our final meeting of 2025. One of our guest speakers will be Todd Davison, Chief of Park Police and ERACE Coordinator who will give us information about ERACE. Pat Leaman will also give us an update about Neighborhood Watch. The Meadview Choir will entertain us with a sneak peak of the Christmas Cantata. Refreshments will be served at 9:45 am and the meeting will start at 10:00. Hope to see you all then.

IMPORTANT DATES AND EVENTS

- December 6** Farmer's Market Meadview Marketplace 9-Noon
- December 9** St. Mary's Food Distribution VFW 10:00 am
- December 10** Busy Hands—MCA Auditorium 10:30am--6pm
- December 10** Meadview Chamber of Commerce Meeting-Barn Event Center at 6:15 pm
- December 12** Movie Night—Barn Event Center 6:00 pm
- December 13** Ladies Christmas Luncheon at the Meadview Community Church at 11:30 am
- December 14** Christmas Cantata—Meadview Community Church at 5:00 pm
- December 16** Quail Meeting-MCA Auditorium 10:00 am

IN THIS ISSUE...

- Community Event Calendar December/January Page 2
- Christmas Caravan Home Tour Page 2
- Grand Wash Cliffs Facts Page 2
- Quail Meeting Page 3
- Mt. Tipton Children's Choir Page 3
- St. Mary's Food Bank Distributions Page 3
- Meadview Connection—Church News Page 5
- Anthony's Sports Corner Page 5
- Meadview Library Page 7
- Holiday Safety Tip Page 7

MEADVIEW COMMUNITY EVENT CALENDAR FOR DECEMBER 2025 / JANUARY 2026

- December 4** COM December Meeting at 10:00 am in the MCA auditorium. Refreshments served at 9:45.
- December 5** Bingo in the MCA Auditorium. Doors open at 12:00 and games begin at 1:00 pm
- December 6** Farmer's Market in the Meadview Marketplace from 9:00 am—noon
- December 9** St. Mary's Food Bank Distribution in the VFW parking lot at approximately 10:00 am
- December 10** Busy Hands—MCA Auditorium from 10:30 am —6:00 pm
- December 10** Meadview Area Chamber of Commerce Meeting in the Barn Event Center at 6:15 pm
- December 12** Bingo in the MCA Auditorium. Doors open at 12:00 and games begin at 1:00 pm
- December 12** Movie Night at the Barn Event Center at 6:00 pm sponsored by the Meadview History Museum
- December 13** Ladies Christmas Luncheon at the Meadview Community Church at 11:30 am
- December 14** Christmas Cantata at the Meadview Community Church at 5:00 pm
- December 16** Quail Meeting in the MCA Auditorium at 10:00 am
- December 17** Mohave County Mobile Healthcare Unit—MCA parking lot from 9:00—noon
- December 18** Mt. Tipton student body choir to sing Christmas Carols in the MCA at 9:15 am.
- December 20** Farmer's Market in the Meadview Marketplace from 9:00 am—noon
- December 21** Christmas Caravan Tour of decorated homes. Meet at the MCA for refreshments. Leave at 6:00 pm.
- December 24** Santa Run
- December 25** Christmas Day
- December 31** New Year's Eve
- January 1** New Year's Day — Welcome 2026
- January 2** Bingo in the MCA Auditorium. Doors open at 12:00 and games begin at 1:00 pm
- January 3** Farmer's Market in the Meadview Marketplace from 9:00 am—noon

**CHRISTMAS HOME
DECORATING/LIGHTING TOUR
SUNDAY, DECEMBER 21 at 6:00 pm**



If you want your home included on the tour, please call Darlene Post at (949) 456-2234 before December 15. Darlene and Mike Post will be our tour guides.

The tour will start at the MCA at 6:00 p.m. with a walk-through of the beautifully decorated grounds.

Everyone is invited to load up on packages of cookies and "to go" cups of hot chocolate and apple cider to enjoy during the tour.

COMMUNITY NEWS

Published every other Friday

Fees for ads: 3" ad: \$6.00 per issue

1/4 page: \$8.00 per issue

Half page: \$16.00 per issue

Full page: \$32.00 per issue

Business card ad/\$6.00 per issue

Please put ads with the payment into the Community News drop box at the Post Office or mail to P.O. Box 31, Meadview, **Make checks payable to "COM"**. Ads can be emailed to comads@comaz.info and payment can be put in the drop box at the post office.

The next issue date is December 19, 2025 The deadline is December 13, 2025 at 4:00 pm.

The opinions expressed in this publication are those of the authors submitting various articles and do not reflect the opinions of COM, the board or its members. COM reserves the right to refuse to accept any advertising that may be illegal or not in compliance with our platform.

Meadview Historical Society

presents

INTO THE WILD

Friday, December 12 at 6 pm

FREE!

@
The Barn

Popcorn, candy,
& drinks for purchase!



GRAND WASH CLIFFS FACTS

by Donelle Huffer



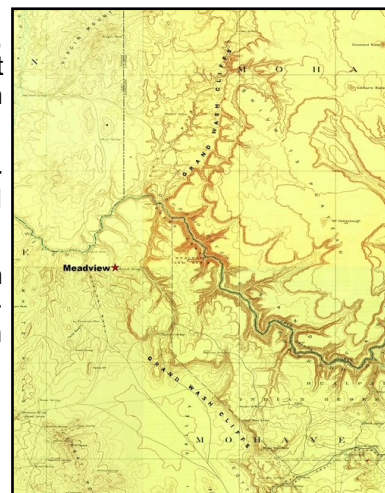
Did you know that the geologic layers in the Grand Wash Cliffs are some of the same as found throughout the Grand Canyon? These layers include the Supai Group, Redwall Limestone, Temple Butte Formation, Muav Limestone and Bright Angel Shale. Can you spot the layers?

Here are a few additional facts:

The Grand Wash Cliffs stretch about 80 miles, extending from the Grand Canyon-Parashant National Monument north of the Grand Canyon to just north of Hackberry, Arizona.

The Grand Wash Cliffs form the western edge of the Colorado Plateau, marking a striking and abrupt transition in northwestern Arizona between the Colorado Plateau and the Basin and Range physiographic provinces.

The highest point in the Grand Wash Cliffs is a 6,769-foot hilltop overlooking Iron Spring Wash and the Hualapai Valley. On top is a USGS benchmark named the Duncan Benchmark after Tap Duncan, who owned the Diamond Bar Ranch beginning in 1910 and who was associated with the Hole in the Wall Gang.



ST. MARY'S FOOD BANK



The next food distribution will be on December 9 at approximately 10:00 am in the VFW parking lot. The second December distribution will be on December 23. Be prepared to show proof of Arizona residency.

MT. TIPTON SCHOOL STUDENT CHOIR

On December 18 at 9:15 am, busloads of Mt. Tipton School students will come to the MCA. The Mt. Tipton School kids will be here to spread some Christmas cheer and entertain us by singing Christmas Carols. Please show your support for the children and come to join the fun!



It's for the kids....



Meetings

MCA Auditorium @ 247 E Meadview Blvd

**December 16, 2025
@ 10:00 am**

Program for this meeting is:

Christmas Caroling & Silent Auction

Featuring
Kelli Tennant

Come Join Us!

We are devoted to raising monies to be awarded to qualifying students.





**SAVE THE DATE –
FRIDAY, DECEMBER 12
7:00 PM–?**



**THE ANNUAL
UGLY SWEATER /
PAJAMA PARTY**



**ENTERTAINMENT
BY
DAVID PARKER**



290 Pueblo • Meadview, AZ
(928) 564-2100

LOCAL CHURCH NEWS

Meadview Community Church
 540 Hualapai Creek Dr
 (928) 218-1563

- **Sunday**
 9:30 AM Sunday School
 10:45 AM Morning Worship
 ** **10:45 AM** Children's Church
 12:00 PM Fellowship Time
- **Wednesday**
 5:00 PM Bible Study
- Friday**
 1:00 PM Bingo at MCA

Men's Breakfast— November & December is cancelled.

Mark your calendars:

12/13 Ladies Luncheon 11:30AM
12/14 Cantata 5:00PM

***New **Children's Church will be from 10:45-11:45. Ages 5-12 welcome
 Check out our website for current events at: meadviewcommunitychurch.com

Meadview Baptist Church
Pastor Curtis O'Brien
1035 Meadview Blvd.
 (928) 564-5305

MBCPastor2112018@gmail.com
www.meadviewbaptist.com

WEEKLY SCHEDULE:

Sunday - 8:30 AM—Praise Team Practice

9:30 AM - Sunday School
 11:00 AM - Worship Service

Wednesday— 4:00pm—Bible Study

First Saturday of the month: Women's breakfast 9:00 am at 1155 Meadview Blvd. at Parsonage.

First Saturday of the month: Men's breakfast at 9:00 am Meadview Baptist Church, 1035 Meadview Blvd.

Saturday—3:30 PM—Praise Team Practice

HOLIDAY SAFETY TIP:
IF YOUR BIRTH YEAR
STARTS WITH 19, YOU
SHOULD NO LONGER
WRAP GIFTS ON THE
FLOOR.

MEADVIEW CONNECTION

ANTHONY'S SPORTS CORNER

The Arizona Cardinals lost a close one last weekend against the Tampa Bay Buccaneers by a field goal. That makes our record 3-9 and with this loss, the Cardinals have been eliminated from the playoffs. Although their record might look bad, they only lost by three points or by a field goal in most of the games. Murray has been on the Injury list most of the year, so we had to use our back-up quarterback. The Cardinals play the LA Rams on Sunday, December 7 at home.

In college football, Oregon is coming in at #5. Georgia is now #4. Texas is coming in at #3 and Indiana is #2. Their quarterback is in the running for the Heisman Trophy this year. Ohio State is still ranked at #1. My Virginia team has done well this year. They beat Virginia Tech this past weekend making their record 10-2. They will be playing in the ACC conference Championship game on December 6 against Duke. If they win, they might be able to get in the College Football National championship playoffs to compete against the top 12 teams. Arizona University finished with a 9-3 record this year and Arizona State finished with a record of 8-4.

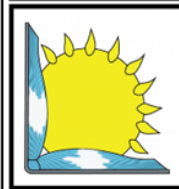
The Phoenix Suns are in 7th place in the Western Conference with a record of 12-9.

College Basketball is only in its first month. Duke is coming in at #5. Houston is #4. UCONN is coming in at #3. Arizona is ranked at #2 and Purdue is coming in at #2.

The Vegas Golden Knights moved up to 3rd place in the Pacific Division with a record of 11-6. They have started out pretty good and, hopefully, they can keep it up.

The 2026 Winter Olympics, officially the XXV Winter Olympic Games, will take place from February 6 to 22. The games will be held at sites across Lombardy and Northeast Italy and will be known as Milano Cortina 2026.

As always, you can watch your favorite sporting events at Anthony's Fisherman's Landing Bar. Until the next issue, keep watching sports, my friends.



MOHAVE COUNTY LIBRARY DISTRICT
 Meadview Community Library
 149 East Meadview Blvd.
 Meadview, AZ 86444
 (928) 564-2535
www.mohavecountylibrary.us

Connect with us @



Good day Meadview community!

This month we are taking a closer look at American author Janet Evanovich. Born in South River, New Jersey Evanovich didn't start her career until her mid-thirties, choosing to marry and have children first. Some of her early work was under the name Steffie Hall. For ten years she attempted to write Great American Novels, but had no success. Upon suggestion, she started writing romance novels and really made her mark with the Stephanie Plum mystery series. Today, Evanovich is a NY Times best-selling author, with her last seventeen Plum series novels debuting at number one. If you would like to check out this author, please come by the library. We have a large collection of her work and would be happy to help you.

The library also offers printing, internet, and faxing services.
 The library is open Tuesday-Thursday-Saturday 10am-3pm.
Library Representative; Julia Kolvenbach.

Anthony's FISHERMAN'S LANDING'S Bar



**PLEASE JOIN US FOR OUR
NEW YEAR'S EVE PARTY
TO RING IN THE NEW YEAR
WEDNESDAY, DECEMBER 31**



**THE FUN STARTS AT 8:00 PM
AND LASTS UNTIL ???**

**ENTERTAINMENT BY
DAVID PARKER AND FRIENDS**



290 Pueblo • Meadview, AZ
(928) 564-2100

Are you ready to get some projects done?

Old Iron Earthworks will be offering services from septs, site preparation, demolition and clean up to clearing, grading and much more.

We will be operating from Meadview January 1st through March, other times possible with arrangements.

You can find us on Facebook @ Old Iron Earthworks or feel free to call/text Mike (307)679-2064 or Katrina (307)708-5675.

Call now to schedule your project!

Not sure if we can help you with something else?

Contact us and we'll see what we can help you with.

Canyon Cutz 

30125 Escalante Dr Meadview, AZ 86444



Vikilee Brooksby
(435) 673-1593
Monday, Wednesday, Friday
11:00 am--3:00 pm

Eva Strahl
(928) 377-2646
Tuesday, Thursday, Saturday
9:00 am-1:00 pm

Now offering Powder Dip Nails
Mention this ad and receive \$5 off any service.

Please text or call for an appointment.
Specializing in Men's and Women's Haircuts
Color, Perms, Facial waxing, Pedicures
Gift Certificates Available



We have entertainment and tournaments!!

MONDAY Shuffleboard Tournament 4:00 PM
MONDAY Karaoke with Cindy Lou 6:00 PM—10

TUESDAY Quick and Dead Tournament 5:00 PM

WEDNESDAY Shuffleboard Tournament 11 AM
WEDNESDAY David Parker and Friends 7PM

THURSDAY 9 Ball Double Elimination
Pool Tournament 5:00 PM

FRIDAY 8 Ball Tournament 5:00 PM
FRIDAY David Parker 7:00 PM

SUNDAY Guitar Playing and Singing with Jay 5:30 PM
Please come out and join us



290 Pueblo • Meadview, AZ
(928) 564-2100



Dawn Brannies, Designated Broker
UPGRADES GALORE



Perfect Weekender or Full-Time Home
Almost Everything is New for Move-In
Fully Fenced ½ Acre and No Local CC&R's

Always Ready to help you List and Sell!!

Jonathan Kiser, Manager
Kat Howard, Sales ♦ Darlene Post, Sales
Christina Purkiss, Sales
(928) 564-2222 ★ 335 E. Pueblo Drive



(928) 328-8811

edie@idea-depot.net

470 E Pueblo Drive

"Little Barn"
Meadview, Arizona

Graphic Design
Printing
Laminating
Signs
Posters
Custom Mugs
Vinyl Applications
Laser Engraving
So Much More...



**BoatHouse
Café & Grille**

**8:00 AM
to
8:00 PM**

Open 7 Days



928-328-8850

30185 N Escalante Blvd

OUTPOST 86444

Hours of Operation

Monday - Friday 11:00 am 'til 6 pm

Saturday 11 am 'til 4 pm

250 E Pueblo Drive
(928) 377-5477



**THE
WAFFLE
CONE**

FROZEN CUSTARD & MORE



Did you know that you can do all
of this right here in Meadview?

- **FRESH** Deli items
- **Party Platters**
- **Pizza Parties**
- **Private Events**
- **Birthday Parties**



Call to explore your options today!

928-328-8818

Closed Monday & Tuesday

Open Wednesday through Sunday
from 11AM until 6PM

300 East Meadview Boulevard . Suite F & G
Meadview, Arizona 86444



**MEADVIEW
MARKET**

**WEDNESDAY THRU MONDAY
11 AM - 6 PM**

Grocery List

☒ MILK

☐ BREAD

☒ BUTTER

☐ FRESH VEGGIES

☒ FRESH FRUIT

☐ EGGS

☒ BAGGED ICE



30120 N Stillwater Dr / \$26,500 / MLS #025732



Prime commercial location for this scenic .
 .45 acre property
 Septic system installed with water at property line and
 access to electric
 Located in the City Center and
 can be used for multiple commercial purposes



Michelene Provo/Designated Broker
Realtor / Owner
Professional service with
excellent communication!
(928) 716-1472



Holiday incentives 15% off!
Glaser Steel 760-553-3444



Visit the Gift Gallery
At the Meadview Area
Chamber of Commerce

330 E. Meadview Boulevard, Suite D
 Meadview, AZ 86444

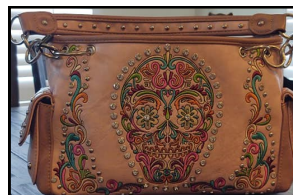
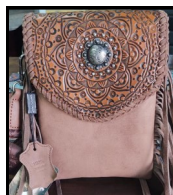
Open Wednesday – Friday 10 AM - 3 PM
Saturday 9AM - 3 PM
Sunday 11 AM - 3 PM

LOCALLY HANDCRAFTED ITEMS
Welcome Packets Available

Thank you for your support!
(928) 564-2425



Metal and More
Yard Art and Home Décor
Hot New Items!



These beautiful handbags feature a Concealed Carry Pocket
 More styles available while supplies last

Open Monday-Wednesday 9:00 am—3:00 pm
Thursday-Saturday 8:00 am-4:00 pm
Closed Sunday
115 Pueblo Drive

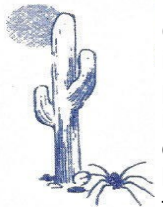
Allan—(928) 727-9253



27070 N. Pierce Ferry Rd
928-564-2855

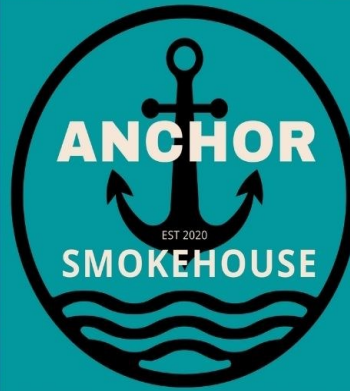
- ASCE CERTIFIED
- A/C
- TUNE UPS & BRAKES
- RV STORAGE
- BOAT STORAGE
- TOWING

BLUE MOON PEST CONTROL
 LLC #5541



Out of Kingman, AZ is interested in doing your pest control. We will be coming to Meadview on the 1st Tuesday of each month. If you would like service please call our office at:

928-692-9417
 Please ask for Cheryl



TUESDAY THRU
 SUNDAY
 12:00-7:00PM

\$12.99

STEAMTABLE

CHECK US OUT ON FACEBOOK
 @Anchorsmokehouse2019



165 Bradley Bay
 Meadview, Arizona 86444
 928-564-2880

**SHOP LOCAL.
 EAT LOCAL.
 SPEND LOCAL**

Welcome to Anthony's

FISHERMAN'S
LANDING'S
Bar

290 E Pueblo Drive • (928) 564-2100

World Famous Bloody Marys & Margaritas!

ATM • Touch Tunes • Package Store

LOCAL ORGANIZATIONS

If changes need to be made to your notice, please send an email to COM at comads@comaz.info

FRIENDS OF THE LIBRARY

Meets on the third Saturday of odd numbered months at 3:00 pm in the library.
564-2535

BOOK DISCUSSION GROUP

Meets on the third Saturday of even numbered months at 3:00 pm in the library
564-2535

COMMUNITY ORGANIZATION OF MEADVIEW (COM)

Meets at 10:00 am on the first Thursday of each month at the MCA Sept-May. Presents monthly programs of general interest to the community and publishes the Community News. Please visit the COM Website: www.comaz.info No membership required. (928) 564-2187.

D.A.R.

The Daughters of the American Revolution meet the 2nd Saturday every month in Kingman at the College Park Community Church September through May.



For God & Country
Veterans Advocacy
928-564-2666

RED, WHITE AND BLUE QUILTERS OF MEADVIEW

We are a non-profit group that makes quilts for Meadview are veterans.

We meet the 3rd and 4th Thursday each month at Meadview Community Church at 10:00 am.

For more information, please call Carolyn at (928) 715-7232

MEADVIEW BAPTIST CHURCH

www.meadviewbaptist.com
Sunday School 9:30 am
Sunday Worship 11:00 am
Mid-week Bible Study Wednesday at 4:00 pm

(928) 564-5305

MEADVIEW COMMUNITY CHURCH

540 Hualapai Creek Dr. (928) 218-1563

Sunday School 9:30 am
Sunday Worship 10:45 am
Sunday Fellowship Time 12:00 pm
Bible Study--Every other Wed. 5:00 pm
Check our website for dates
Bingo every Friday at the MCA at 1:00 pm
<https://meadviewcommunitychurch.com>

OUR LADY OF THE DESERT MISSION

Dolan Springs, 928-767-3397
Rev. Victor Yakubu, Parochial Administrator
Rev. Julius Kayiwa, Parochial Vicar
Saturday Mass 4:00 PM English
Sunday Mass 10:00 AM Spanish

THE CHURCH OF JESUS CHRIST OF LATTER DAY SAINTS

Meets every Sunday from 10:00 am to 12:00 noon.
16375 Pierce Ferry Road
Dolan Springs, AZ
(928) 737-3100

MEADVIEW QUAIL

Meets on 3rd Tuesday of each month at 10:00 am at the MCA (except for June, July and Aug.)



MEADVIEW AREA CHAMBER OF COMMERCE

Meets on the second Wednesday of the month at 6:15 pm in the Barn. Visit website for more information: 564-2425

NEIGHBORHOOD WATCH

Meet on the last Saturday of odd numbered months at 10 am in the MCA except the November meeting on Nov. 22.

VETERANS OFF ROAD RIDERS

Meet the last Saturday of each month at 9:00 am at the VFW

MCA NEWS

Busy Hands

Every Wednesday
10:30 - 6:00 pm
Come for a while or stay the whole time

MCA MEMBER MEETING

Quarterly 2nd Saturday
9:00 am at the MCA.
All members urged to attend.

Daily Facility Hours
8:00 am—9:00 pm

Office Hours

Tuesday-Friday: 9:00 am-4:00 pm
Saturday 9:00 am—1:00 pm
Closed Sunday and Monday
564-2313

EXPLORERS

The Explorers schedule hikes and day trips of places of interest throughout Mohave County. Follow the Explorer's activities on Facebook at Meadview Explorers.

BINGO

Fridays at 1:00 pm.
The doors will open at 12:00 P.M.
We are always looking for volunteers.
Please call Cindy at (909) 659-6618

MEADVIEW RIDGERIDERS

Meet on the first Saturday of the month at 8:30 am in the MCA with a ride following the meeting. Call (406) 431-4616 for more information

<https://www.facebook.com/MeadviewRidgeRiders/>

FARMER'S MARKET

1st and 3rd Saturday
9:00 am—Noon
At the Meadview Marketplace

If the information in your notice changes, please send corrections or changes to comads@outlook.com



KINGMAN REGIONAL MEDICAL CENTER

Your Partner for Better Health

As the largest healthcare provider in northwest Arizona, we offer a full range of services to meet the health and wellness needs of our vibrant, growing community. Our services range from essential primary and preventative care to sophisticated medical imaging and diagnostic capabilities, as well as advanced treatments in cardiac care and cancer care. We also provide progressive rehabilitation and pain management therapies.



Medical Directory

Balance Therapy

KRMC Dizziness & Balance Center . . . 681-8732

Cancer Care

KRMC WL Nugent Cancer Center . . . 692-4665

Cardiovascular Care

Kingman Cardiovascular
Associates 681-8724

Chiropractic Care

Kingman Orthopedics 263-3516

Disease Management

KRMC Disease Management Clinic . . . 681-8738

Gastroenterology

High Desert Gastroenterology 681-8715

General Surgery

Hillcrest Surgical Associates 681-3535
KRMC Pre-Operative Clinic 681-8728
Mohave Surgical Specialists 681-8720

Home Health

KRMC Home Health 757-0630

Hospice

KRMC Hospice Services 692-4680
KRMC Joan & Diana
Hospice Home 681-8710

Medical Imaging

KRMC Imaging Center 692-2727

Laboratory Services

KRMC Medical Professional Center
Laboratory 263-4600
KRMC Hualapai Mountain Campus
Laboratory 263-3673
KRMC Golden Valley Medical Center
Laboratory 681-8500

Obstetrics/Gynecology

Kingman OB/GYN Associates 681-8705

Orthopedic Care

Kingman Orthopedics 681-8693

Pain Management

KRMC Pain Management 681-8570

Pediatrics

Joshua Tree Pediatrics 681-8706

Physical Fitness

Del E. Webb Wellness &
Rehabilitation Center 692-4600

Physical Therapy & Rehabilitation

KRMC Outpatient Therapy 681-8732

Physiatry

KRMC Physiatry 681-8732

Primary Care

Golden Valley Medical Center 681-8500
KRMC Family Practice
Residency Clinic 681-8701
KRMC Primary Care 681-8530
Mountain Shadow Family Medicine . . 681-8530

Pulmonary Care

Kingman Pulmonary Associates . . . 757-3133
KRMC Lung Health Program 681-8736

Sleep Disorders

KRMC Sleep Disorders Center 692-4144

Speech Therapy

KRMC Speech &
Hearing Specialists 681-8717

Sports Medicine

Kingman Orthopedics 681-8693

Thoracic Surgery

Kingman Thoracic Surgery 681-8520

Urgent Care

KRMC Urgent Care 753-3303

Urology

Kingman Urology 681-8686

Vein Center

High Desert Vein Center Kingman . . 681-8755