



Community News

of Meadview and Lake Mead City

SPONSORED BY
THE COMMUNITY ORGANIZATION OF MEADVIEW

online at <www.comaz.info>

Adrienne O'Keeffe-Editor
Jonathan Kiser--Assistant Editor

NOVEMBER 21, 2025

MEADVIEW CRAFT SHOWS NOVEMBER 29, 2024 9:00 AM--2:00 PM

Enjoy a full day of Holiday Activities on Saturday, November 29. Start with the annual Christmas Craft Shows from 9:00 am – 2:00 pm at the Meadview Community Church and the MCA.

Locations:

**Meadview Community Church
Craft Show and Bake Sale**

540 W. Hualapai Drive

**Meadview Civic Association
Craft Show**

247 E. Meadview Boulevard

At 6:00 pm, head over to the Meadview Marketplace parking lot for the Christmas Launch Party when Santa arrives in Meadview.

COM DECEMBER 4 MEETING



Please join us on December 4 at 10:00 am in the MCA Auditorium for our final meeting for 2025. Our guest speaker will be Todd Davison, Chief of Park Police and ERACE Coordinator who will give us information about ERACE. Pat Leaman will also give us an update about Neighborhood Watch. The Meadview Choir will entertain us with a sneak peak of the Christmas Cantata. Refreshments will be served at 9:45 am and the meeting will start at 10:00. Hope to see you all then.

IMPORTANT DATES AND EVENTS

November 25	Food Distribution VFW parking lot 10:00 am
November 25	LMRFD Ask the Chief Meeting—MCA at 10am
November 27	Happy Thanksgiving everyone.
November 29	Craft Fair Day at the Community Church and the MCA from 9:00 am—2:00 pm
November 29	Christmas Launch Party —Meadview Marketplace parking lot at 6:00 pm.
December 3	Busy Hands MCA Auditorium 10:30am-6:00
December 4	COM December Meeting MCA at 10:00 am Refreshments served at 9:45.

IN THIS ISSUE...

Community Event Calendar November/Dec.	Page 2
Christmas Launch Party	Page 3
COM December Meeting	Page 4
Where Desert Meets Plateau	Page 6
Mt. Tipton Children's Choir	Page 6
Ask the Chief Meeting with Fire Chief Bonnee	Page 6
Meadview Connection—Church News	Page 7
Anthony's Sports Corner	Page 7
St. Mary's Food Bank Food Distribution	Page 7
Christmas Caravan Home Tour	Page 7
County Corner	Page 8

MEADVIEW COMMUNITY EVENT CALENDAR FOR NOVEMBER/DECEMBER 2025

- November 21** Bingo in the MCA Auditorium. Doors open at 12:00 and games begin at 1:00 pm
- November 25** Ask the Chief Meeting about Annexation at the MCA at 10:00 am
- November 25** St. Mary's Food Distribution in the VFW parking lot at approximately 10:00 am
- November 27** **Happy Thanksgiving everyone.** Gobble until you wobble
- November 28** Bingo in the MCA Auditorium. Doors open at 12:00 and games begin at 1:00 pm
- November 29** Craft Fair Day at the Meadview Community Church and the MCA from 9:00 am—2:00 pm
- November 29** Christmas Launch Party in the Meadview Marketplace parking lot at 6:00 pm. See the ad on page 3.
- December 3** Busy Hands—MCA Auditorium from 10:30 am —6:00 pm
- December 4** COM December Meeting at 10:00 am in the MCA auditorium. Refreshments served at 9:45.
- December 5** Bingo in the MCA Auditorium. Doors open at 12:00 and games begin at 1:00 pm
- December 6** Farmer's Market in the Meadview Marketplace from 9:00 am—noon
- December 9** St. Mary's Food Bank Distribution in the VFW parking lot at approximately 10:00 am
- December 10** Busy Hands—MCA Auditorium from 10:30 am —6:00 pm
- December 10** Meadview Area Chamber of Commerce Meeting in the Barn Event Center at 6:15 pm
- December 12** Bingo in the MCA Auditorium. Doors open at 12:00 and games begin at 1:00 pm
- December 12** Movie Night at the Barn Event Center at 6:00 pm sponsored by the Meadview History Museum
- December 13** Ladies Christmas Luncheon at the Meadview Community Church at 11:30 am
- December 14** Christmas Cantata at the Meadview Community Church at 5:00 pm
- December 16** Quail Meeting in the MCA Auditorium at 10:00 am
- December 17** Mt. Tipton student body choir to sing Christmas Carols in the MCA at 9:15 am.
- December 20** Farmer's Market in the Meadview Marketplace from 9:00 am—noon

**COMMUNITY NEWS**

Published every other Friday

Fees for ads: 3" ad: \$6.00 per issue

1/4 page: \$8.00 per issue

Half page: \$16.00 per issue

Full page: \$32.00 per issue

Business card ad/\$6.00 per issue

Please put ads with the payment into the Community News drop box at the Post Office or mail to P.O. Box 31, Meadview, **Make checks payable to "COM"**. Ads can be emailed to comads@comaz.info and payment can be put in the drop box at the post office.

The next issue date is December 5, 2025 The deadline is November 29, 2025 at 4:00 pm.

The opinions expressed in this publication are those of the authors submitting various articles and do not reflect the options of COM, the board or its members. COM reserves the right to refuse to accept any advertising that may be illegal or not in compliance with our platform.

Meadview Area Chamber of Commerce

..... **November 29th**



FEATURING

Santa : Mrs Claus : Camp Fire

STARTS AT 6PM | FREE SNACKS | FREE HOT DRINKS

330 E Meadview Blvd

JOIN THE **C**ommunity **O**rganization of **M**eadview

**December 4, 2025 COM Meeting
At 10:00 am**



Todd Davison
Chief of Park Police and
ERACE Coordinator

Pat Leaman,
Neighborhood Watch
and

A Special Performance
by the Meadview Choir



**Refreshments
served at 9:45**



Neighborhood
Watch:
"See Something,
Say Something"

**IN THE MCA AUDITORIUM
AT 247 E MEADVIEW BLVD**



**SAVE THE DATE –
FRIDAY, DECEMBER 12
7:00 PM–?**



**THE ANNUAL
UGLY SWEATER /
PAJAMA PARTY**



**ENTERTAINMENT
BY
DAVID PARKER**



290 Pueblo • Meadview, AZ
(928) 564-2100

WHERE DESERT MEETS PLATEAU: MEADVIEW'S UNIQUE PLACE IN ARIZONA'S LANDSCAPE

By Sharon Baur

Nestled near the western edge of the Grand Canyon, Meadview, Arizona isn't just a quiet desert town — it's a geological and ecological crossroads. Our community sits in a fascinating transition zone where the low-elevation Mojave Desert gradually gives way to the uplifted Colorado Plateau, creating a blend of landscapes, climates and ecosystems that few places in the Southwest can claim.

The Mojave Desert: Our Western Neighbor

To the west of Meadview stretches the Mojave Desert, known for its iconic Joshua trees, arid basins, and dramatic temperature swings. This desert region dominates much of southern California and western Arizona, shaping the terrain with its sparse vegetation and rugged beauty.

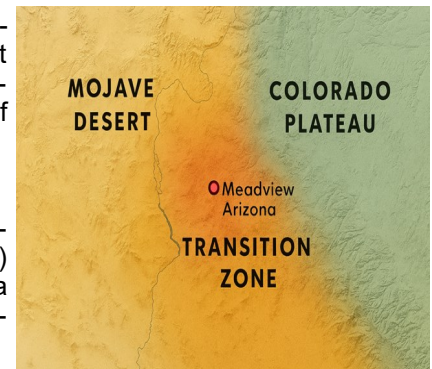
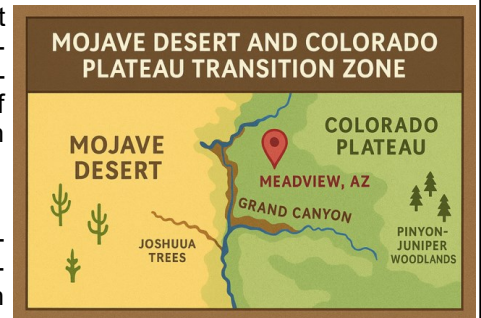
The Colorado Plateau: Rising to the East

Just east of town, the land begins to rise into the Colorado Plateau — a vast, elevated region that spans four states and includes the Grand Canyon, Monument Valley, and countless mesas and canyons. With higher elevations and cooler temperatures, the Plateau supports pinyon-juniper woodlands and a different set of wildlife and plant life than the desert below.

Meadview's Transition Zone

Meadview lies in the Grand Wash trough, a geologic feature that marks the boundary between the Basin and Range province (which includes the Mojave Desert) and the Colorado Plateau. This makes our town part of a local transition zone — a place where desert flora like creosote and Joshua trees mingle with plateau species like pinyon pine and juniper.

This unique location means residents and visitors can witness dramatic shifts in scenery and ecology within just a few miles. It's not uncommon to see desert scrub on one side of a trail and woodland species on the other.



MT. TIPTON SCHOOL STUDENT CHOIR

On December 17 at 9:15 am, busloads of Mt. Tipton School students will come to the MCA. The Mt. Tipton School kids will be here to spread some Christmas cheer and entertain us by singing Christmas Carols. Please show your support for the children and come to join the fun!



LMRFD ASK THE CHIEF MEETING

Informal Q&A at the MCA

To answer questions left unanswered by the recent Annexation Workshop Presentation.

Tuesday, November 25

10:00 a.m. -

All are welcome!

* Bring your tax bill if you want to know whether you are in or out of the Fire District.

*Annexation forms will be available.

LOCAL CHURCH NEWS

Meadview Community Church
 540 Hualapai Creek Dr
 (928) 218-1563

- **Sunday**
 9:30 AM Sunday School
 10:45 AM Morning Worship
 ** 10:45 AM Children's Church
 12:00 PM Fellowship Time
- **Wednesday**
 5:00 PM Bible Study
- **Friday**
 1:00 PM Bingo at MCA

Men's Breakfast— November & December is cancelled.

Mark your calendars:

11/29 Craft Fair/Bake Sale 9-2
12/13 Ladies Luncheon 11:30AM
12/14 Cantata 5:00PM

***New **Children's Church will be from 10:45-11:45. Ages 5-12 welcome

Check out our website for current events at: meadviewcommunitychurch.com

Meadview Baptist Church
Pastor Curtis O'Brien
1035 Meadview Blvd.
 (928) 564-5305

MBCPastor2112018@gmail.com
www.meadviewbaptist.com

WEEKLY SCHEDULE:

Sunday - 8:30 AM—Praise Team Practice

9:30 AM - Sunday School
 11:00 AM - Worship Service

Wednesday— 4:00pm—Bible Study

First Saturday of the month: Women's breakfast 9:00 am at 1155 Meadview Blvd. at Parsonage.

First Saturday of the month: Men's breakfast at 9:00 am Meadview Baptist Church, 1035 Meadview Blvd.

Saturday—3:30 PM—Praise Team Practice

MEADVIEW CONNECTION

ANTHONY'S SPORTS CORNER

The Arizona Cardinals lost a big one against the San Francisco 49ers this past weekend. The final score of 41-22 makes the Cardinal's record 3-7 for the season. They will play Jacksonville Jaguars on November 23 at home. Hopefully, they will win this game.

The College Football regular season is almost over. It's been a good season so far with upsets almost every week. Ole Miss is coming in at #5 this week. Georgia is #4. Texas A&M is coming in at #3 and Indiana is ranked #2. Ohio State is still coming in at #1 where they have been there all year. Texas A&M played against South Carolina and were losing 30-3 at half time. They came back to win the game 31-30. What a great game this was! College Football Playoffs will start December 19 with the top 12 teams competing. The Quarterback of the Indiana Hoosiers, Fernando Mendoza is favored to win the Heisman Trophy this year. My Virginia football team has done well this year with a 9-2 record. They play Virginia Tech this coming Saturday.

The College Basketball 2025-2026 season started November 3. Arizona is ranked at #4. UConn is coming in at #3, Houston is #2 and Purdue is ranked #1 so far. The regular season will end March 15, 2026 so there's a lot of basketball action to see. The Virginia basketball team is ranked #5 in the ACC conference with a record of 4-0.

In the National Hockey League, the Vegas Golden Knights are in 4th place in the Pacific Division in the Western Conference with a record of 8-4-6.

The 2026 Winter Olympics, officially the XXV Winter Olympic Games will take place from February 6-22. The games will be held at sites across Lombardy and Northeast Italy and will be known as Milano Cortina 2026.

As always, you can watch your favorite sporting events at Anthony's Fisherman's Landing Bar. Until the next issue, keep watching sports, my friends.

**CHRISTMAS HOME
 DECORATING/LIGHTING TOUR
 SUNDAY, DECEMBER 21 at 6:00 pm**

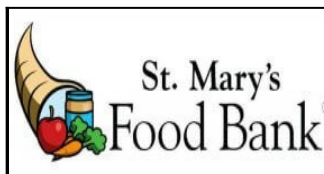


If you want your home included on the tour, please call Darlene Post at (949) 456-2234 before December 15. Darlene and Mike Post will be our tour guides.

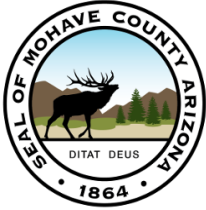
The tour will start at the MCA at 6:00 p.m. with a walk-through of the beautifully decorated grounds.

Everyone is invited to load up on packages of cookies and "to go" cups of hot chocolate and apple cider to enjoy during the tour.

ST. MARY'S FOOD BANK



The next food distribution will be on November 25 at approximately 10:00 am in the VFW parking lot. The first December distribution will be on December 9. Be prepared to show proof of Arizona residency.



COUNTY CORNER

by Jeanne Kentch, Mohave County Assessor

Happy fall Mohave County, the weather is amazing, Thanksgiving is soon here and Christmas and New Years just around the corner. Where has the time gone? It seems it was just yesterday that I was re-elected as your County Assessor.

I wanted to begin by reminding everyone that the Assessor Programs application window starts January 2nd, 2026. We have programs for Widows, Widowers, 100% Disabled, Disabled Veteran and now In-Service Disabled Veterans. Each of the above programs are open for applications from **January 2nd until February 28, 2026**. Applicants need to apply in person at one of the three Assessor offices listed below.

Exemptions can save you a considerable amount of money and are easy to apply for. There are general qualifications to obtain an exemption; applicants must be a current resident of Arizona. ARS 42-11111 provides SAVINGS off the *assessed value* of all residents that qualify. This can result in an estimated annual tax savings of \$150-\$500. The deadline for applying for exemptions is **February 28, 2026**.

Another program we have in the Assessor's office is the Senior Property Valuation Protection Program. We call this the "Senior Freeze". This program will freeze your Limited Property Value for as long as you live at your home. Re-Qualification is necessary every 3 years. Income and Net Assessed value is taken into consideration to qualify. The application window for the Senior Freeze is **January 2nd to September 1, 2026**.

Then finally we have our award-winning Assessors Address Protection Program (AAPP). This program will help secure your home ownership, avoiding deed fraud. Our AAPP program requires you to verify your identity through a notary using proper Identification. Once your identity is verified we will mark your account in the AAPP program and call you if ANY transfer comes into our office for your parcel. This pro-active approach secures your parcel from transfer, preventing deed fraud. You can apply to the AAPP program throughout the entire year. There is a one-time \$50 charge to be in the AAPP program.

I am proud to announce our AAPP program has been chosen to be included in a bill that will be presented this next legislative season to hopefully become a law. I was honored to be a part of the coalition addressing deed fraud in the state of Arizona. This bipartisan coalition found the AAPP program to be the most effective approach to tackle deed fraud. Other actions will be in this bill as well to help Arizona property owners in securing their ownership. I am humbled the coalition chose Mohave's program and thrilled if passed the rest of Arizona will be offering this program to their property owners.

Speaking of bills, I have been elected as the new Arizona Association of County Officers (AACO) President. AACO is our lobbyist organization that helps us get our bills passed by the legislature. AACO represents Assessors, Recorders, Treasurers, County Attorneys, County School Superintendents, Sheriffs, Clerks of the Court and Constables. I am thrilled to lead this great group of elected officials and take pride in doing all I can to advance some very important bills this season. For my next County Corner I will brief you on some of the bills we will be working on, hoping some of you will help me advocate for them as well.

Please have a blessed Holiday Season, stay healthy and safe.

Kingman Branch

Second Floor-Administration Building
700 W. Beale Street
Phone-928-753-0703
Fax-928-753-0749
Hours 8 a.m. to 5 pm

Bullhead City Branch

County Complex
1130 Hancock Street
Phone-928-758-0701
Fax-928-758-0711
Hours 8 a.m. to 5 p.m.

Lake Havasu City Branch

West side of County Court House
2001 College Drive
Phone-928-453-0702
Fax-928-453-0726
Hours 8 a.m. to 5 p.m

Are you ready to get some projects done?

Old Iron Earthworks will be offering services from septs, site preparation, demolition and clean up to clearing, grading and much more.

We will be operating from Meadview January 1st through March, other times possible with arrangements.

You can find us on Facebook @ Old Iron Earthworks or feel free to call/text Mike (307)679-2064 or Katrina (307)708-5675.

Call now to schedule your project!

Not sure if we can help you with something else?

Contact us and we'll see what we can help you with.

Canyon Cutz 

30125 Escalante Dr Meadview, AZ 86444



Vikilee Brooksby
(435) 673-1593
Monday, Wednesday, Friday
11:00 am--3:00 pm

Eva Strahl
(928) 377-2646
Tuesday, Thursday, Saturday
9:00 am-1:00 pm

Now offering Powder Dip Nails
Mention this ad and receive \$5 off any service.

Please text or call for an appointment.
Specializing in Men's and Women's Haircuts
Color, Perms, Facial waxing, Pedicures
Gift Certificates Available



We have entertainment and tournaments!!

MONDAY Shuffleboard Tournament 4:00 PM
MONDAY Karaoke with Cindy Lou 6:00 PM—10

TUESDAY Quick and Dead Tournament 5:00 PM

WEDNESDAY Shuffleboard Tournament 11 AM
WEDNESDAY David Parker and Friends 7PM

THURSDAY 9 Ball Double Elimination
Pool Tournament 5:00 PM

FRIDAY 8 Ball Tournament 5:00 PM
FRIDAY David Parker 7:00 PM

SUNDAY Guitar Playing and Singing with Jay 5:30 PM
Please come out and join us



290 Pueblo • Meadview, AZ
(928) 564-2100



Dawn Brannies, Designated Broker
ALL ON THE LEVEL



Easy Maintenance Move-In Ready Home
Stunning Views from Front and Back Patios
Detached 2 Car Garage with Bath
You Really Have to See to Believe!

Always Ready to help you List and Sell!

Jonathan Kiser, Manager
Kat Howard, Sales ♦ Darlene Post, Sales
Christina Purkiss, Sales
(928) 564-2222 ★ 335 E. Pueblo Drive



(928) 328-8811

edie@idea-depot.net

470 E Pueblo Drive

"Little Barn"
Meadview, Arizona

Graphic Design
Printing
Laminating
Signs
Posters
Custom Mugs
Vinyl Applications
Laser Engraving
So Much More...



**BoatHouse
Café & Grille**

**8:00 AM
to
8:00 PM**

Open 7 Days



928-328-8850

30185 N Escalante Blvd

OUTPOST 86444

Hours of Operation

Monday - Friday 11:00 am 'til 6 pm

Saturday 11 am 'til 4 pm

250 E Pueblo Drive
(928) 377-5477



**THE
WAFFLE
CONE**

FROZEN CUSTARD & MORE



Did you know that you can do all
of this right here in Meadview?

- **FRESH** Deli items
- **Party Platters**
- **Pizza Parties**
- **Private Events**
- **Birthday Parties**



Call to explore your options today!

928-328-8818

Closed Monday & Tuesday

Open Wednesday through Sunday
from 11AM until 6PM

300 East Meadview Boulevard . Suite F & G
Meadview, Arizona 86444



**MEADVIEW
MARKET**

**WEDNESDAY THRU MONDAY
11 AM - 6 PM**

Grocery List

☒ MILK

☐ BREAD

☒ BUTTER

☐ FRESH VEGGIES

☒ FRESH FRUIT

☐ EGGS

☒ BAGGED ICE



30120 N Stillwater Dr / \$26,500 / MLS #025732



Prime commercial location for this scenic .
 .45 acre property
 Septic system installed with water at property line and
 access to electric
 Located in the City Center and
 can be used for multiple commercial purposes



Michelene Provo/Designated Broker
Realtor / Owner
Professional service with
excellent communication!
(928) 716-1472



Visit the Gift Gallery At the Meadview Area Chamber of Commerce

330 E. Meadview Boulevard, Suite D
 Meadview, AZ 86444

Open Wednesday – Friday 10 AM - 3 PM
Saturday 9AM - 3 PM
Sunday 11 AM - 3 PM

LOCALLY HANDCRAFTED ITEMS
Welcome Packets Available

Thank you for your support!
(928) 564-2425

Clip and bring this Advertisement
 for 10% off your next purchase.
 Expires September 30, 2025

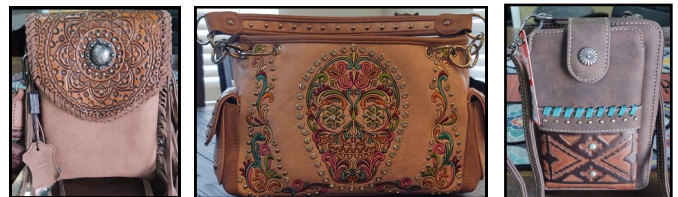
Glaser Steel
**HIGHEST
 QUALITY**
 760-553-3444

Holiday incentives start
 now!

15% OFF!



Metal and More
Yard Art and Home Décor
Hot New Items!



These beautiful handbags feature a Concealed Carry Pocket
 More styles available while supplies last

Open Monday-Wednesday 9:00 am—3:00 pm
Thursday-Saturday 8:00 am-4:00 pm
Closed Sunday
115 Pueblo Drive

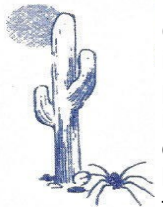
Allan—(928) 727-9253



27070 N. Pierce Ferry Rd
928-564-2855

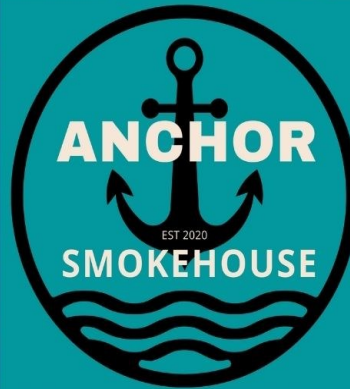
- ASCE CERTIFIED
- A/C
- TUNE UPS & BRAKES
- RV STORAGE
- BOAT STORAGE
- TOWING

BLUE MOON PEST CONTROL
 LLC #5541



Out of Kingman, AZ is interested in doing your pest control. We will be coming to Meadview on the 1st Tuesday of each month. If you would like service please call our office at:

928-692-9417
 Please ask for Cheryl



TUESDAY THRU
 SUNDAY
 12:00-7:00PM

\$12.99

STEAMTABLE

CHECK US OUT ON FACEBOOK
 @Anchorsmokehouse2019



165 Bradley Bay
 Meadview, Arizona
 928-564-2880 86444

**SHOP LOCAL.
 EAT LOCAL.
 SPEND LOCAL**

Welcome to Anthony's

FISHERMAN'S
LANDING'S
Bar

290 E Pueblo Drive • (928) 564-2100

World Famous Bloody Marys & Margaritas!

ATM • Touch Tunes • Package Store

LOCAL ORGANIZATIONS

If changes need to be made to your notice, please send an email to COM at comads@comaz.info

FRIENDS OF THE LIBRARY

Meets on the third Saturday of odd numbered months at 3:00 pm in the library.
564-2535

BOOK DISCUSSION GROUP

Meets on the third Saturday of even numbered months at 3:00 pm in the library
564-2535

COMMUNITY ORGANIZATION OF MEADVIEW (COM)

Meets at 10:00 am on the first Thursday of each month at the MCA Sept-May. Presents monthly programs of general interest to the community and publishes the Community News. Please visit the COM Website: www.comaz.info No membership required. (928) 564-2187.

D.A.R.

The Daughters of the American Revolution meet the 2nd Saturday every month in Kingman at the College Park Community Church September through May.



For God & Country
Veterans Advocacy
928-564-2666

RED, WHITE AND BLUE QUILTERS OF MEADVIEW

We are a non-profit group that makes quilts for Meadview are veterans.

We meet the 3rd and 4th Thursday each month at Meadview Community Church at 10:00 am.

For more information, please call Carolyn at (928) 715-7232

MEADVIEW BAPTIST CHURCH

www.meadviewbaptist.com
Sunday School 9:30 am
Sunday Worship 11:00 am
Mid-week Bible Study Wednesday at 4:00 pm
(928) 564-5305

MEADVIEW COMMUNITY CHURCH

540 Hualapai Creek Dr. (928) 218-1563
Sunday School 9:30 am
Sunday Worship 10:45 am
Sunday Fellowship Time 12:00 pm
Bible Study--Every other Wed. 5:00 pm
Check our website for dates
Bingo every Friday at the MCA at 1:00 pm
<https://meadviewcommunitychurch.com>

OUR LADY OF THE DESERT MISSION

Dolan Springs, 928-767-3397
Rev. Victor Yakubu, Parochial Administrator
Rev. Julius Kayiwa, Parochial Vicar
Saturday Mass 4:00 PM English
Sunday Mass 10:00 AM Spanish

THE CHURCH OF JESUS CHRIST OF LATTER DAY SAINTS

Meets every Sunday from 10:00 am to 12:00 noon.
16375 Pierce Ferry Road
Dolan Springs, AZ
(928) 737-3100

MEADVIEW QUAIL

Meets on 3rd Tuesday of each month at 10:00 am at the MCA (except for June, July and Aug.)



MEADVIEW AREA CHAMBER OF COMMERCE

Meets on the second Wednesday of the month at 6:15 pm in the Barn. Visit website for more information: 564-2425

NEIGHBORHOOD WATCH

Meet on the last Saturday of odd numbered months at 10 am in the MCA except the November meeting on Nov. 22.

VETERANS OFF ROAD RIDERS

Meet the last Saturday of each month at 9:00 am at the VFW

MCA NEWS

Busy Hands

Every Wednesday
10:30 - 6:00 pm
Come for a while or stay the whole time

MCA MEMBER MEETING

Quarterly 2nd Saturday
9:00 am at the MCA.
All members urged to attend.
Daily Facility Hours
8:00 am—9:00 pm

Office Hours

Tuesday-Friday: 9:00 am-4:00 pm
Saturday 9:00 am—1:00 pm
Closed Sunday and Monday
564-2313

EXPLORERS

The Explorers schedule hikes and day trips of places of interest throughout Mohave County. Follow the Explorer's activities on Facebook at Meadview Explorers.

BINGO

Fridays at 1:00 pm.
The doors will open at 12:00 P.M.
We are always looking for volunteers.
Please call Cindy at (909) 659-6618

MEADVIEW RIDGERIDERS

Meet on the first Saturday of the month at 8:30 am in the MCA with a ride following the meeting. Call (406) 431-4616 for more information

<https://www.facebook.com/MeadviewRidgeRiders/>

FARMER'S MARKET

1st and 3rd Saturday
9:00 am—Noon
At the Meadview Marketplace

If the information in your notice changes, please send corrections or changes to comads@outlook.com



KINGMAN REGIONAL MEDICAL CENTER

Your Partner for Better Health

As the largest healthcare provider in northwest Arizona, we offer a full range of services to meet the health and wellness needs of our vibrant, growing community. Our services range from essential primary and preventative care to sophisticated medical imaging and diagnostic capabilities, as well as advanced treatments in cardiac care and cancer care. We also provide progressive rehabilitation and pain management therapies.



Medical Directory

Balance Therapy

KRMC Dizziness & Balance Center . . . 681-8732

Cancer Care

KRMC WL Nugent Cancer Center . . . 692-4665

Cardiovascular Care

Kingman Cardiovascular
Associates 681-8724

Chiropractic Care

Kingman Orthopedics 263-3516

Disease Management

KRMC Disease Management Clinic . . . 681-8738

Gastroenterology

High Desert Gastroenterology 681-8715

General Surgery

Hillcrest Surgical Associates 681-3535
KRMC Pre-Operative Clinic 681-8728
Mohave Surgical Specialists 681-8720

Home Health

KRMC Home Health 757-0630

Hospice

KRMC Hospice Services 692-4680
KRMC Joan & Diana
Hospice Home 681-8710

Medical Imaging

KRMC Imaging Center 692-2727

Laboratory Services

KRMC Medical Professional Center
Laboratory 263-4600
KRMC Hualapai Mountain Campus
Laboratory 263-3673
KRMC Golden Valley Medical Center
Laboratory 681-8500

Obstetrics/Gynecology

Kingman OB/GYN Associates 681-8705

Orthopedic Care

Kingman Orthopedics 681-8693

Pain Management

KRMC Pain Management 681-8570

Pediatrics

Joshua Tree Pediatrics 681-8706

Physical Fitness

Del E. Webb Wellness &
Rehabilitation Center 692-4600

Physical Therapy & Rehabilitation

KRMC Outpatient Therapy 681-8732

Physiatry

KRMC Physiatry 681-8732

Primary Care

Golden Valley Medical Center 681-8500
KRMC Family Practice
Residency Clinic 681-8701
KRMC Primary Care 681-8530
Mountain Shadow Family Medicine . . 681-8530

Pulmonary Care

Kingman Pulmonary Associates . . . 757-3133
KRMC Lung Health Program 681-8736

Sleep Disorders

KRMC Sleep Disorders Center 692-4144

Speech Therapy

KRMC Speech &
Hearing Specialists 681-8717

Sports Medicine

Kingman Orthopedics 681-8693

Thoracic Surgery

Kingman Thoracic Surgery 681-8520

Urgent Care

KRMC Urgent Care 753-3303

Urology

Kingman Urology 681-8686

Vein Center

High Desert Vein Center Kingman . . 681-8755